

Help Document

Notice:

All rights reserved.

Corvallis Microtechnology, Inc. reserves the right to make changes to its products and specifications without notice.

Copyright© 2012 - 2014 by Corvallis Microtechnology, Inc.

<http://www.cmtinc.com>

<http://icmtgis.wordpress.com>

Please email suggestions for enhancements to:
support@cmtinc.com

Overview

Open a Deed Calls File

Display Map

Set First Node and Symbolism

Set up Units and Angle

Set up Feature Labels

Enter Deed Calls

View/Edit Deed Calls

View the Summary

Measure Distance

Measure Area

Save the Deed Calls File

Export to PDF

Export to DXF

Email Files

Overview

Deed Calls - Area - Perimeter is a universal application software that can be used

on an Apple® iPad®, iPhone® or iPod touch® device. It will let you input calls from a legal metes and bounds description, title deed or other text description of a parcel of land to map out the boundary and create a deed drawing in your map as well as view the perimeter and enclosed area.

You will be able to specify the location of the first node then enter angles and distances to draw each segment of the property boundary, which could be displayed over a Map when the latter is available.

When you start this application, you will see a number of tool icons displayed across the top of the screen.



Main Menu (pull-down list)

Tap this icon to display the list of functions on the Main Menu:

Job provides the options to open or save a job file.

Export to PDF provides functions for saving the deed plot data to a PDF file and for viewing or printing an existing PDF file.

Export to DXF provides the function for saving the deed plot shape to a DXF file.

Map provides the Map display options as well as the function to close the Map.

Email Files provides the function to email the Deed Calls file.

Setup provides options for units and label properties.

Help displays this help file.

About Deed Calls - Area - Perimeter shows the application software name and version.



Measure Tool



Save File



Zoom-Fit



Node Selection Toggle



GPS Menu

GPS On/Off
Position Info

Edit Mode Toggle

On-screen keyboard

An on-screen keyboard will automatically pop up when the focus is on a data entry screen. After entering data, tap the **Return** button on the pop-up keyboard. If a Next button is displayed in the data entry dialog, then tap that button to go to the next step. To hide the keyboard, tap the **Hide Keyboard Key** on the pop-up keyboard.

When entering numeric data, you will notice that there is a **Special Key** showing several symbols on it. This key will facilitate data entry in several ways.


To enter a distance value with a fractional part, tap this key to put in the decimal point.

To enter angles in **DMS** (Degrees- Minutes-Seconds), if your data value will not fill in all the places, then tap the special key after entering the desired value. For example, to enter the longitude of 91°09'26.082"W, you could type in 0910926.082W. Or, you could type 91, tap the special key, type 9, tap the special key, then enter 26.082W.

Similarly, to enter angles in **Decimal Degrees**, instead of filling in the leading zeros, you could tap the special key after entering the desired number of digits in the integer part of the value. For example, if you wish to enter the slope angle of, say 10, for a Traverse or Side-shot Point, remember to tap the special key after entering the 10. Otherwise, you will have entered a slope angle of 100. Alternatively, you could enter "010" to fill all the integer places.

[Back to TOC](#)

Open a Deed Calls File

Tap the **Main Menu** icon , select Job, select **Open Job** then select an existing Deed Calls File to open. A file named **example.dcf** has been included as a sample Deed Calls File.

To create a new Deed Calls File, enter a new file name then tap the **OK** button. (Yes, it's okay to type over the displayed file name.)

Please go ahead and create a new file called **test1.dcf**.

To cancel the action of opening a file, tap the **Cancel** button.

If you wish to save the job data under a different name, you can use the **Job/Save As** function to do so.

[Back to TOC](#)

Display Map

Whenever you are connected to the Internet and your location can be determined, the built-in Map can be displayed as the background map for your deed drawing. This may help in locating the first node for your deed drawing. (Make sure the **Location Service** is turned on for the Deed Calls - Area - Perimeter application software.)

You may select one of the following view modes after tapping the **Menu** button then choosing **Map**:

Show Standard - Show a map of streets and landmarks.

Show Satellite - Show satellite photos.

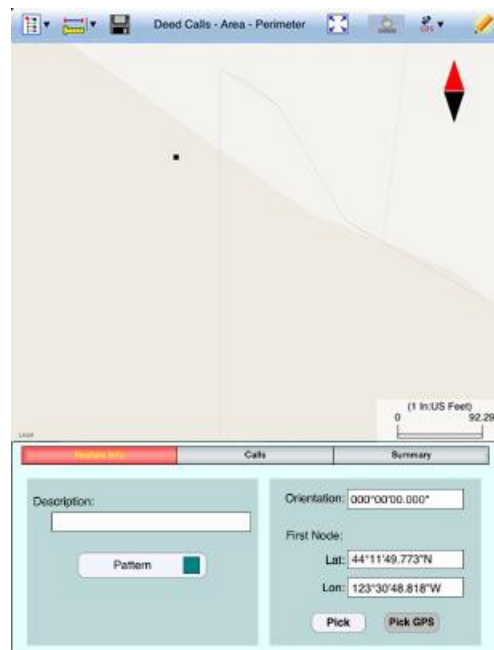
Show Hybrid - Show street names on satellite photos.

To turn off the Map display, tap **Close Map** on the Map menu.

[Back to TOC](#)

Set First Node and Symbolism

Tap the **First Node** tab to specify the starting point in one of the following ways:



a) Tap the **Pick** button then tap a location on the screen to use it as the first node. If you just want to see what the deed plot will look like, you may select any spot on the screen as your initial node. However, if you wish to place the deed plot on a geographic location then turn on **Map** then pan and pull to display the map area showing your location. Then tap the spot that best represents the point of beginning for your deed plot.

You could make use of the donut-shaped Node Tool  to place the point more

precisely on the Map. To do so, first tap on the **Node tool**. A larger donut with crosshairs at its center will be displayed on the screen. Touch on the purple area of this tool and drag the crosshairs to the desired position. Now tap once in the donut hole to drop the point. You could also keep holding down on the purple donut and use another finger to touch outside of the donut area to drop the point.

b) If you know the coordinates (**Latitude and Longitude**) of the first node, then enter these into the corresponding fields to pinpoint the first node.

If you don't know the location of the point of beginning at the time you are entering the deed calls, you may just tap a location on the screen and use it as the first node for the drawing. Later, when you have the exact coordinates of the first node, you may tap the First Node tab and enter that information. In that case, the entire Deed Calls drawing will be automatically moved to the new location.

c) If you are using an iPad® equipped with GPS and doing the angle and distance measurements on the spot, you could tap the **GPS** icon to turn on the GPS to help you position yourself at the point of beginning. Tap the **Pick GPS** button to use the GPS position as the First Node. Enter the measurements as they are made, and you will have a completed drawing on the spot. (Make sure the **Location Service** is turned on for the Deed Calls - Perimeter - Area application software.)


If your deed plot is not aligned with the displayed Map, you could enter an angle into the **Orientation** field to rotate the plot.

You may optionally enter a **Description** for the deed drawing you are about to create.

You may also specify the line style and area pattern for your deed drawing by tapping the **Pattern** button then selecting the desired symbols and colors. The area pattern will be used to represent closed areas only.

[Back to TOC](#)

Set up Units and Angle

Tap the **Menu** icon , select **Setup** then select **Unit and Angle** to specify the appropriate length unit and angle system to use. If using U.S. units of measurement, be sure to check the box **US Survey Unit**.

Specify the **Angle Unit** with choices of: DMS, Decimal Degrees (Degree), Mils or Grads.


Specify the desired **Angle System** for the calls. Available choices are: **Azimuth** or **Bearing**. If Azimuth is chosen, also specify the **Azimuth System**: North or South.

[Back to TOC](#)

Set up Feature Labels

The **Deed Calls - Area - Perimeter** app will label the line segments and arcs of your deed drawing. It will let you specify the position, font and decoration of the

labels relative to the lines and arcs.

Tap the **Menu** icon , select **Setup** then select **Feature Labels** to specify these parameters.

You will also have the choice of showing either the direction angle or the length value above the line segment. The other value will then be shown below the line segment.

[Back to TOC](#)

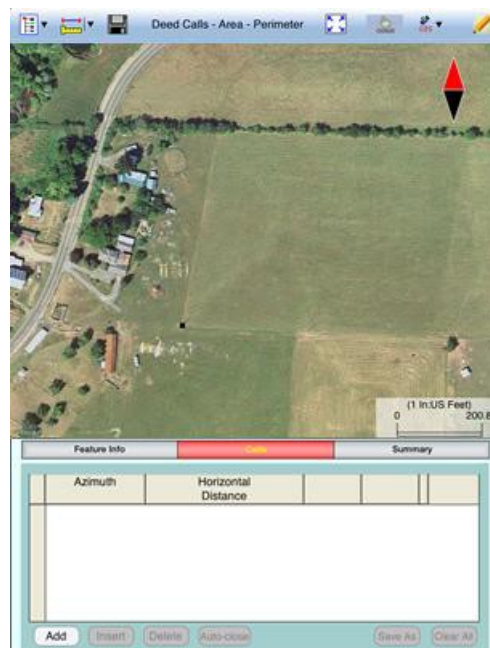
Enter Deed Calls

The following example illustrates the procedure for entering bearing and distance calls for each segment of a boundary to create the deed drawing.

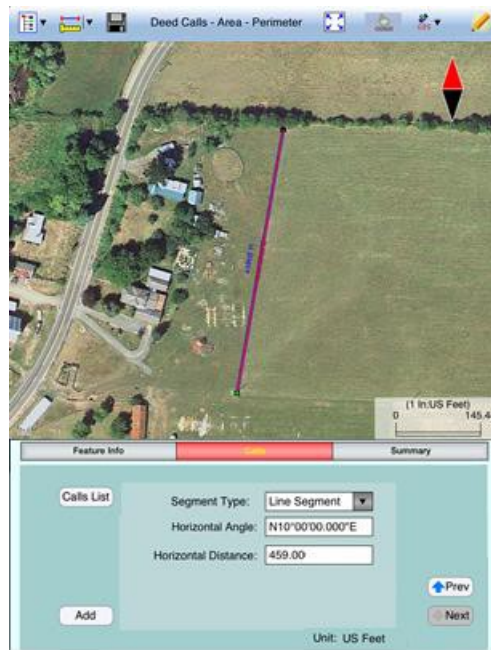
Assume that we have created a new file named **test1.dcf**, and that we have picked a location on a Map screen as the **First Node** for our deed drawing.

We have set US Feet as the length unit, and we will be entering DMS angles in the BEARING mode.

Now tap the **Calls** tab to go to the page that lists the existing deed calls records. Initially there are no records shown.



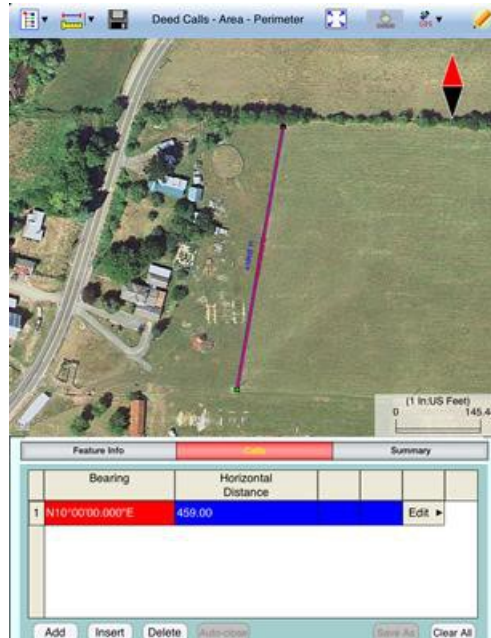
Tap the **Add** button to add a new call record and display the data entry screen.



First, specify the type of segment you will be adding. Choose between **Line Segment** for straight lines or **Arc Segment** to define an arc.

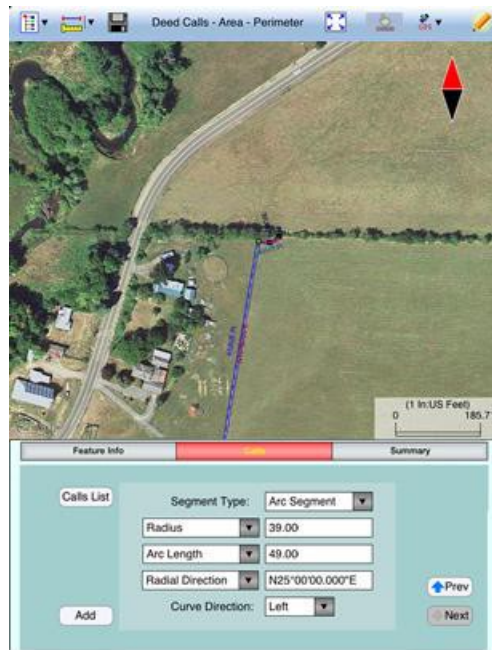
Our first call is a straight **Line Segment**. We enter the horizontal distance of 459 US Ft from the **green** starting point and also specify the bearing of N 10 E.

Tap the **Calls List** button to return to the listing of the Deed Calls records.



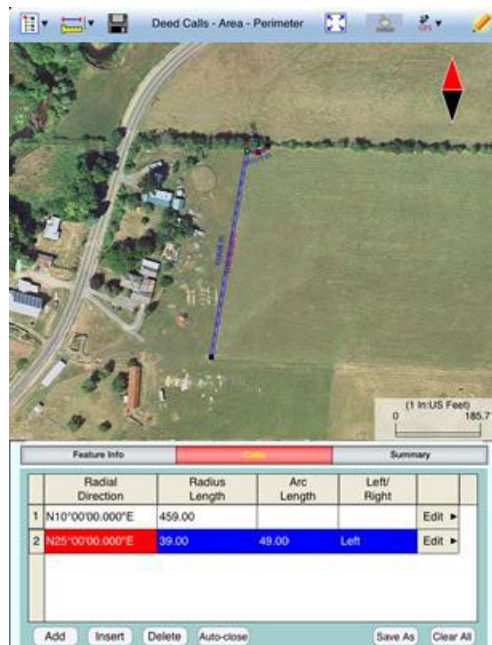
If you need to change the data entered for any record, simply double-tap on the record to call up the data entry screen then enter the correct data.

Tap **Add** and enter an Arc Segment as shown below. Tap the pull-down arrow for each field to select the appropriate option.



For an Arc Segment, specify the size and length of the arc by entering a combination of the **Radius** and one of the following: **Arc Length**, **Chord Length**, **Central Angle**. Also specify the orientation of the curve by entering the **Chord Direction**, the **Tangent Direction** or the **Radial Direction** (from the first node of arc to the center of the circle, of which the arc is a part). Select the **Continuous** option if the curve is to continue in the direction of the last defined curve or line segment. Finally, specify the **Curve Direction** to indicate whether the arc turns left or right.

Tap the **Calls List** button to return to the listing of the Deed Calls records.



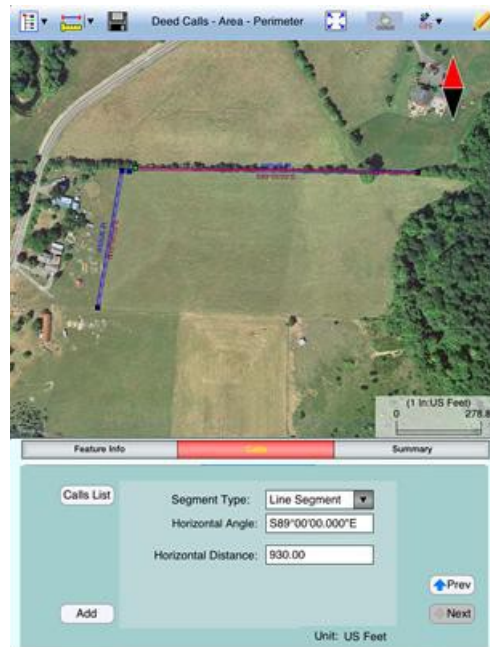
The last entered segment is highlighted in red in the graphical view.

You may zoom into or zoom out of portions of the graphical view by using your fingers to pull or pinch on the display, respectively. To fit the drawing to the

screen, simply tap the **Zoom-Fit** icon. When **Map** is turned on, you may not be able to zoom to a really small scale. In that case, turn off the Map then pull to zoom into the map.

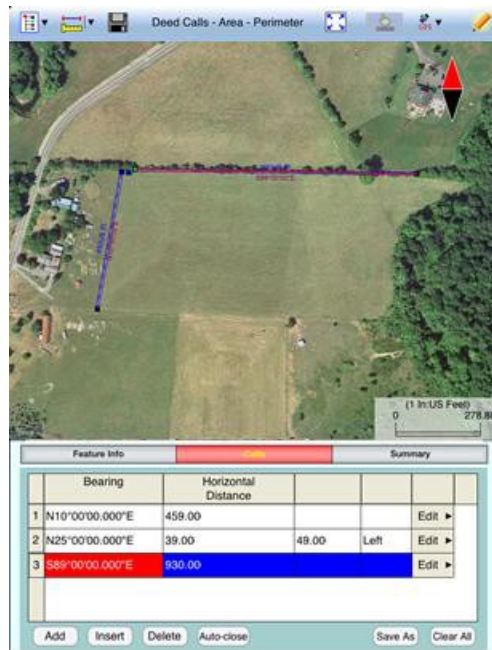
As there could be line segments as well as curve segments in your deed drawing, please note that the column titles for the list of deed calls records correspond to the highlighted record.

Now tap the **Add** button to add a Line Segment as shown below:



If you wish to add a new segment, you could as well tap the **Add** button on this screen. This button will permit you to quickly add one segment after another without having to go back to the previous screen.

We will tap the **Calls List** button to review all the records that we have stored so far:



Whenever the Deed Calls records are displayed, you may tap the **Insert** button to insert a record before the highlighted record, tap the **Delete** button to delete the highlighted record, or tap the **Clear All** button to clear all existing deed calls from the list and start a new deed call drawing.

Caution: Make sure you really want to delete a record or clear all records before confirming to do so. Deleted records cannot be recovered.

When you tap the lit **Edit** icon (pencil) to turn it off, any drawing you have made so far will be displayed in **full screen**.

Complete the drawing by entering the following data:

Line Segment

Horizontal Distance: 172
 Horizontal Angle: S82°00'00.000"E

Line Segment

Horizontal Distance: 120
 Horizontal Angle: S60°00'00.000"W

Arc Segment

Arc Length: 170
 Radius: 200
 Chord Direction: S58°00'00.000"W
 Curve Direction: Left

Arc Segment

Arc Length: 188
 Radius: 170
 Continuous
 Curve Direction: Left

Arc Segment

Arc Length: 185
Radius: 90
Continuous
Curve Direction: Right

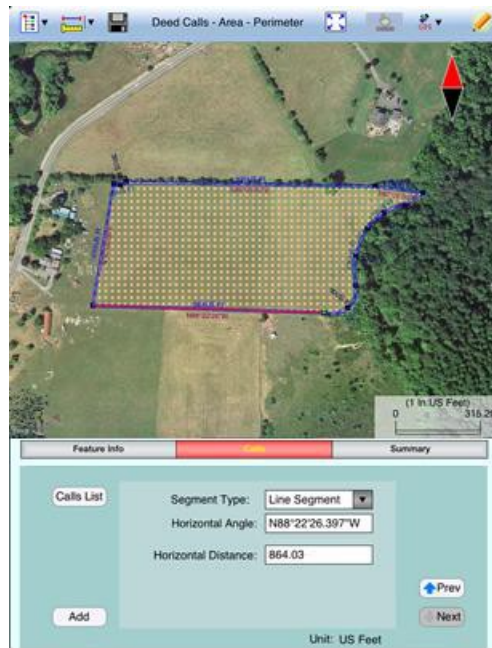
Line Segment

Horizontal Distance: 864
Horizontal Angle: N88°230'00.000"W

Tap the **Summary** button to see the closure errors and the perimeter and area that you would get when the figure is closed.



If you are unsure about the last call and want the **Deed Calls - Area - Perimeter** software to automatically close the loop for you, simply tap the **Auto-close** button. A Line Segment will be generated to snap to the First Node, and the deed plot will be represented as an area. Notice how the closed area is filled with the area pattern you've specified for this deed calls job.



To save the deed calls to a different file than the currently open file, tap the **Save As** button on the Calls page. Specify the name of the new file to which to save the deed calls. The file extension will be ***.DCF (Deed call file)**.

[Back to TOC](#)

View/Edit Deed Calls

To view or make changes to a deed call that you have already entered, first tap the **Calls** tab then **double-tap** the deed call of interest from the list of deed calls to bring up the data entry screen. You may change the data as appropriate or simply tap the **Calls List** button to return to the list of deed calls records.

If the data viewed is not the first or the last deed calls record, the **UP** and/or **DOWN** arrows will be active. You may tap the appropriate button to view or change the previous or next data record, if you wish.

When you are at the last deed calls record, you may tap the **Add** button to add a new call.

To return to the list of deed calls records, tap the **Calls List** button.

In the Calls List screen, tap the **Insert** button if you wish to insert a record before the currently highlighted record.

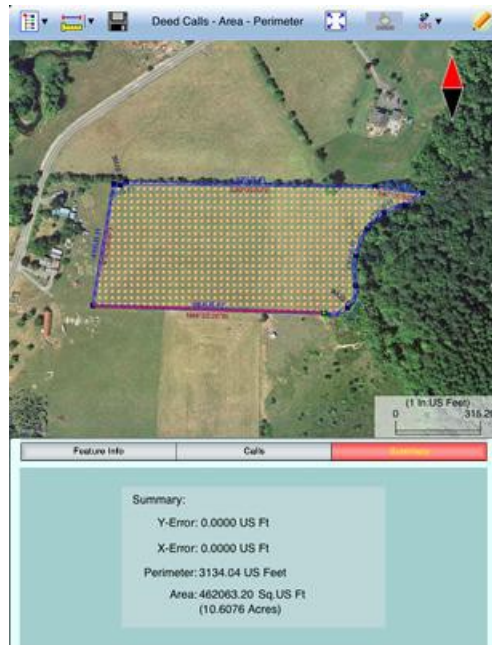
Tap the **Delete** button to delete the currently highlighted record. **Beware that deleted data cannot be recovered.**

To let the software automatically close the area for you, tap the **Auto-close** button.

[Back to TOC](#)


View the Summary


After entering all the deed calls, tap on the **Summary** tab to view the closure error, the perimeter and the enclosed area. The following screen shows the summary screen for the automatically closed area. In this case, there will be no closure error.





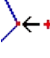
[Back to TOC](#)


Measure Distance

If you would like to know the distance between two or more map locations, first tap on the **Measure Distance** icon  on the **Measurement Tools** pull-down menu. Then tap on the map locations to have the distance calculated. The total distance as well as the length and direction of the last segment added will be displayed.

Whenever you need to place a node precisely, tap on the **Node tool**  then use the crosshairs to zero-in on the desired location.

If your device has GPS capability, you could tap the **GPS** icon  to turn on GPS then tap the **Pick GPS** icon  to add a node for the line to be measured.

Tap on the **Snap to Node** icon  to turn it on when you wish to snap to an existing Point or node by tapping in its vicinity.

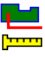
To back-step, tap the **Undo** icon . To delete all the nodes made in this measurement session, tap the **Reset** button.


Please note that the Measure Distance tool will not retain the **temporary** shape you have delineated for computing the distance.



When you no longer need the displayed information, tap the **Back** button to close this screen and discard the temporary shape.

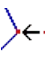
[Back to TOC](#)

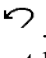
Measure Area

The **Measure Area** tool  on the **Measurement Tools** pull-down menu will compute the area enclosed within a boundary that you form by tapping on the map.

Whenever you need to place a node precisely, tap on the **Node tool**  then use the crosshairs to zero-in on the desired location.

If your device has GPS capability, you could tap the **GPS icon**  to turn on GPS then tap the **Pick GPS icon**  to add a node for the area to be measured.

Tap on the **Snap to Node icon**  to turn it on when you wish to snap to an existing Point or node by tapping in its vicinity.

To back-step, tap the **Undo icon** . To delete all the nodes made in this measurement session, tap the **Reset** button.


Please note that the Measure Area tool will not retain the **temporary** shape you have delineated for computing the area.

When you no longer need the displayed information, tap the **Back** button to close this screen and discard the temporary shape.

[Back to TOC](#)

Save the Deed Calls File

Please note: The data you have entered is not saved until you use the **Save File** or **Save As** function to save it to a .DCF file.

To save the deed calls that you have entered into the currently open file, tap the **Save File icon** . You may also tap the **Main Menu icon**, tap on **Job** then tap on **Save**. The file extension will be ***.DCF (Deed Call file)**. This is an ASCII text file which may be opened and viewed with any text editor.

If you wish to save the data to a different file name then use **Save As** under **Menu/Job** and enter a new file name for saving the data.

The *.DCF files will reside in the Documents folder for the application. To access your *.DCF files outside of the application, first connect to the iTunes® program then look in the Documents folder for the **Deed Calls - Area - Perimeter** app.

The *.DCF files created by the **Deed Calls - Area - Perimeter** app are compatible

with the current releases of the PC-GIS X, PC-GPS, PC-MAPPER and CMT-SURVEY mapping software produced by Corvallis Microtechnology, Inc.

Please note: Before updating to a new version of iOS, first back up all you apps and data files. Also, should you decide to remove an application software for some reason, beware that all the associated data files will be deleted. If you wish to save the data files, please save a copy to your desk-top computer before removing the app.

[Back to TOC](#)

Export to PDF


To save the Deed Calls drawing and data records as a PDF file, select **Export to PDF** from the Main Menu.

To export to a new PDF file, tap on the **New** button. Rename the file, if you wish then tap on the green check mark to confirm

The first page shows the deed drawing. The following page(s) will show the deed calls, the perimeter and the enclosed area.

If you wish to overwrite an existing PDF file, then select that file from the list. **Beware that doing so will erase all the existing contents of the selected PDF file when you tap on OK.**

To make sure you really want to overwrite an existing PDF file, tap on the **View File** check box then select the file you wish to view. In this mode, instead of the **OK** button, you will see a **View** button. Tap the **View** button to display the contents of the highlighted PDF file. Then tap the **Back** button to return to the File Dialog. When you are ready to overwrite the file, unmark the **View File** check box then tap on **OK** to overwrite the file.

If you have an AirPrint Printer, you may tap on the **Printer** icon  then confirm to print the contents of the PDF to that printer.

The exported PDF files will reside in the Documents folder for the application. To access the PDF files exported from the application, first connect to the iTunes® program then look in the Documents folder for the **Deed Calls - Area - Perimeter** app.

Export to DXF

The deed plot shape in the working job file may be exported to a DXF file. The exported DXF file will reside in the **Documents folder** for this app. The DXF file can be used with external programs such as PC-GIS PRO and AutoCAD® .

To export the deed plot to a DXF file, select **Export to DXF** from the **Main Menu**

Select the name of the file into which to export the deed plot then tap on the **OK** button. If you wish to export the data into a new file then tap on the **New** button.

You may confirm the displayed new file name or overwrite it with your own new file name.

The two-dimensional deed plot shape will be exported in LLA WGS84(1150)/ITRF00 and Epoch 01/01/2014.

[Back to TOC](#)

Email Files

You may email one or more files by tapping the Main Menu icon then selecting **Email Files**. Select the PDF or DXF file type then mark the files you wish to email.

Enter the recipient's email address then tap the **Send** button. The selected files will be attached to the email. Optionally add a message then tap the **Send** button to send out the email.

[Back to TOC](#)

Trademark Acknowledgments:

Apple®, iTunes®, iCloud®, iPad®, and MAC®, are trademarks of Apple Inc., registered in the U.S. and other countries.

Windows is a registered trademark of Microsoft Corporation in the United States and other countries.

Map is a mapping service provided by Apple Inc.