

Airborne Inspection using PC-Mapper AI

PC-MAPPER AI is a powerful tool for airborne applications such as **Seasonal Bird Migration**, **Firefighting**, **Natural Resources Inventory**, and **Military Reconnaissance**, as well as ground applications such as **GPS Surveying**, **Precision Farming** and **Automated Tree Harvesting**.

Runs on Microsoft **XP**, **VISTA**, Desktop PC, Notebook PC and **Tablet PC**.

- **Real-Time Navigation**

Track your **real-time GPS** position on top of a Basemap, a DRG map, or a georeferenced aerial photo.

Moving Map automatically **re-oriens** and **scrolls** as you move along. Navigate along a pre-defined route or select any destination on-the-fly. Use any GPS with **NMEA-183** output, or any CMT GPS receiver.



- **All-in-One Professional Mapping**

Use the same PC to plan the mission, collect **GPS/GIS data**, digitize Points, Lines and Areas, label and print out the completed map, as well as manage the **GIS** databases.

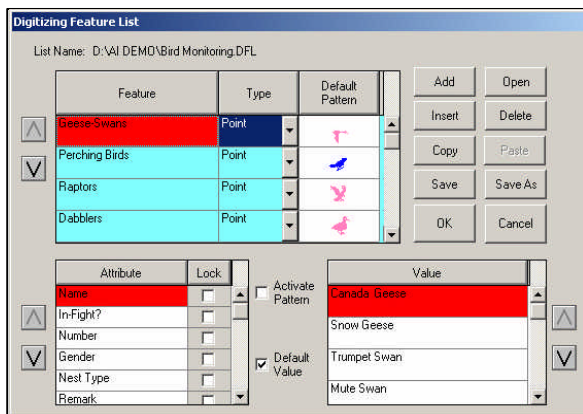


- **Air-borne Inspection**

Look down from an airplane and record what you see onto the displayed map.

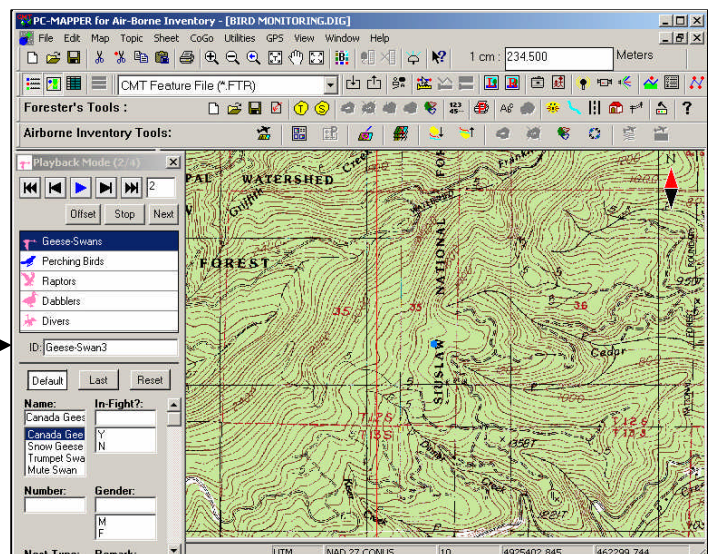
Forbidden Area Warning alerts you when approaching a sensitive area.

Have your **Flight Line** automatically recorded.



Quickly digitize in **Manual** or **Voice** mode, using your own **Digitizing Feature List**.

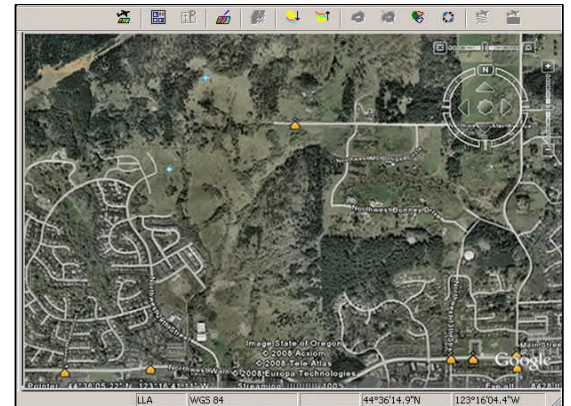
Easily play back voice recording, and assign Feature, Attributes, Values to the Points recorded in the Voice mode.



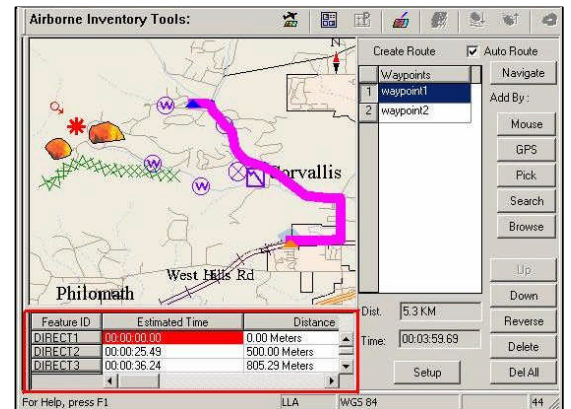
Visit www.cmtinc.com to see a **DEMO** and download an evaluation version.

... Other Highlights *(Detailed function list available at www.cmtinc.com)*

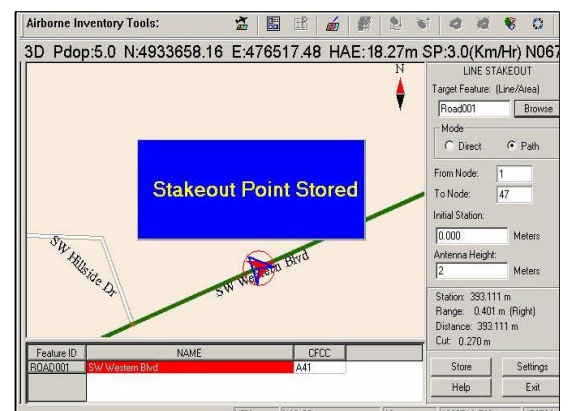
- Automation of Map File Loading**
 Select the mapsheet grid area of interest, and use the **Thematic Map File** to automatically load **GEOTIF**, GEOJPEG, *.SHP, *.DXF, and *.SID files from the specified file folders.
- Google Earth® Interface**
 Capture geo-referenced maps from **Google Earth**.
- Image Transparency**
 Adjust the **transparency** of Area Features and bitmap image layers.
- Labeling**
 Automatically label the Features with IDs, **areas**, distances and other attributes.
- Auto-Routing**
 Select start and end points and let PC-Mapper AI calculate the most efficient route on the road map. Follow the route with turn-by-turn directions (including time and distance).
- GPS Stakeout Functions**
 Perform Point, **Line**, Offset, and Slope stakeout. (e.g. Line Stakeout for laying cables and pipes)
- Surveyor CAD Functions**
Deed Calls, **Traverse** and over 20 coordinate geometry (**COGO**) functions, including: Intersection, Offset Stakeout, Curves, etc.
- Create Grid**
 Create reference grid points and grid lines on your map.
- Contour/Volume Functions**
 Use your GPS data to generate accurate Contour maps. Compute **Cut** and **Fill** Volumes **in the field**.
- Single & Dual Frequency GPS Input**
- Geoid Model and NEZ Coordinate System Support**
- Import/Export Feature data from/to Microsoft® Excel and Access files.**



Capture Geo-referenced Map from Google Earth



Instantly create an Auto Route to your job site



Use Line Stakeout for Pipeline Layout

Visit www.cmtinc.com to see a DEMO and download an evaluation version.